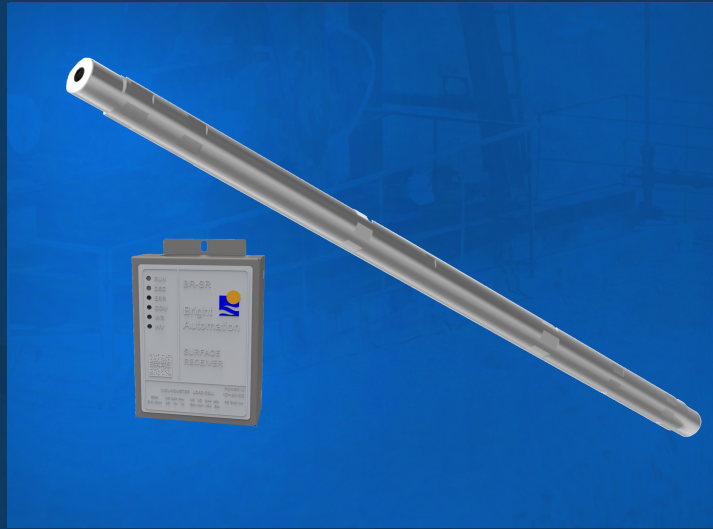


# CONTINUOUS DOWNHOLE GAUGE



## Features

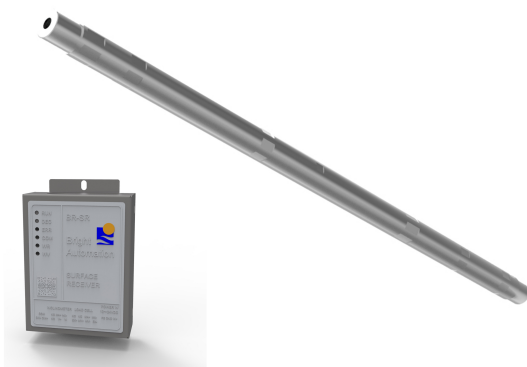
- Permanent downhole gauge
- 8 parameters in one gauge
- 2 wires to downhole, digital signal gauge
- RS485 modbus-rtu to controller/RPC/POC/VSD
- High reliability, Anti 2kV high frequency interference
- ESD  $\pm 15\text{kV}$

## Benefits

- Easy installation
- Strong corrosion resistance

## Features Description

- **Downhole gauge**  
Continus permanent full digital downhole multi parameter pressure gauge.



Technical Parameter		
NO.	ITEM	PARAMETERS
1	Pressure	0~30MPa
2	Temperature	-40℃~150℃
3	X-axis vibration	0~8G
4	Y-axis vibration	0~8G
5	Z-axis vibration	0~8G
6	Inclination angle	0~360°
7	Rotation angle	0~360°
8	Angular velocity of rotation	0~360°/s

Specification		
NO.	ITEM	PARAMETERS
1	Available pressure ranges	10MPa,20MPa,30MPa
2	Output	RS485 Modbus-bus protocol
3	Input voltage	12-24VDC @100mA
4	Pressure accuracy	±0.1%FS
5	Temperature accuracy	±1℃
6	Construction material	Stainless steel 17-4PH
7	Outside diameter	24mm
8	Length	500mm

Bright Automation is an energy industry leader in electronic monitoring and control products and systems, offering a broad range of advanced drilling products – including VFDs, SCRs, top drive control systems, and auto-drilling systems – in addition to its industry-leading line of lift control systems.